

State of Wyoming Corner Record

(In compliance with the **CORNER PERPETUATION AND FILING ACT**, Wyoming Statutes, 1997 Section 33-29-140 et. seq., and the Rules and Regulations of the Board of Professional Engineers and Professional Land Surveyors)

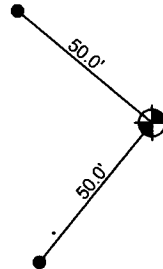
Reverse side of this form may be used if more space is needed.

Record of original survey and citation of source of historical information (if corner is lost or obliterated). Description of corner monumentation evidence found and/or monument and accessories established to perpetuate the location of this corner. Sketch of relative location of monument, accessories, and reference points with course and distance to adjacent corner(s) (if determined in this survey). Method and rationale for reestablishment of lost or obliterated corner.

DETAIL

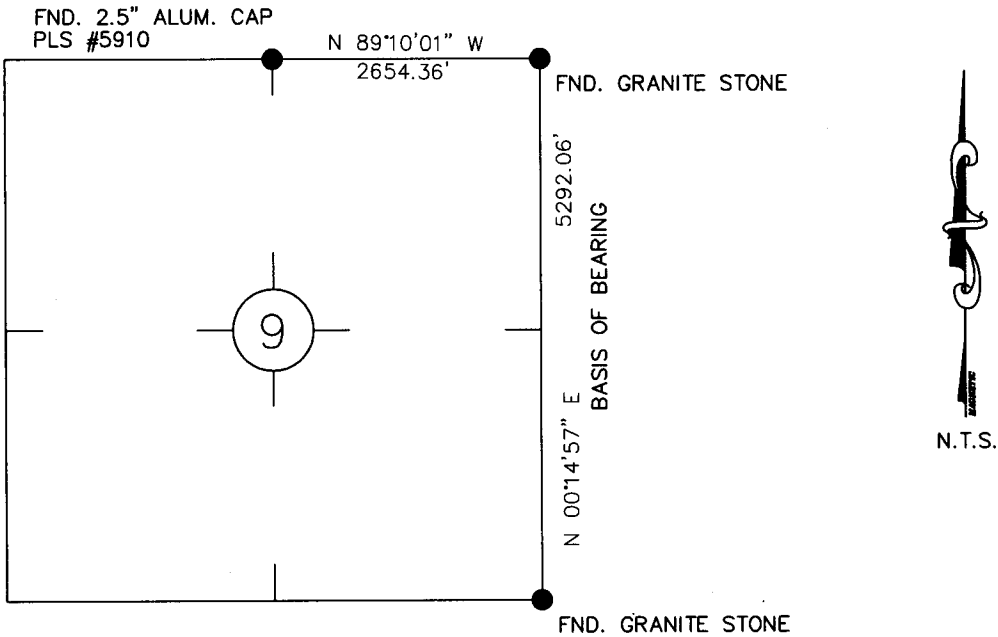
● = SET 2" ALUMINUM CAP STAMPED 50' REF.

FOUND: FND GRANITE STONE



RECORDED 8/25/2010 AT 1:08 PM REC# 551432 BK# 2179 PG# 1504
 DEBRA K. LATHROP, CLERK OF LARAMIE COUNTY, WY PAGE 1 OF 1

Monument location



Date of Field Work: 1-29-10

Office Reference: 501-10-010

Cross Index Plat

	1	2	3	4	5	6	7	8	9	10	11	12	13	14	15	16	17	18	19	20	21	22	23	24	25	
A	+	+	+	+	+	+	+	+	+	+	+	+	+	+	+	+	+	+	+	+	+	+	+	+	+	A
B	+	+	+	+	+	+	+	+	+	+	+	+	+	+	+	+	+	+	+	+	+	+	+	+	+	B
C	+	6	+	5	+	4	+	3	+	2	+	1	+	C												C
D	+	+	+	+	+	+	+	+	+	+	+	+	+	D												D
E	+	+	+	+	+	+	+	+	+	+	+	+	+	E												E
F	+	+	+	+	+	+	+	+	+	+	+	+	+	F												F
G	+	7	+	8	+	9	+	10	+	11	+	12	+	G												G
H	+	+	+	+	+	+	+	+	+	+	+	+	+	H												H
J	+	+	+	+	+	+	+	+	+	+	+	+	+	J												J
K	+	+	+	+	+	+	+	+	+	+	+	+	+	K												K
L	+	18	+	17	+	16	+	15	+	14	+	13	+	L												L
M	+	+	+	+	+	+	+	+	+	+	+	+	+	M												M
N	+	+	+	+	+	+	+	+	+	+	+	+	+	N												N
O	+	+	+	+	+	+	+	+	+	+	+	+	+	O												O
P	+	19	+	20	+	21	+	22	+	23	+	24	+	P												P
Q	+	+	+	+	+	+	+	+	+	+	+	+	+	Q												Q
R	+	+	+	+	+	+	+	+	+	+	+	+	+	R												R
S	+	+	+	+	+	+	+	+	+	+	+	+	+	S												S
T	+	30	+	29	+	28	+	27	+	26	+	25	+	T												T
U	+	+	+	+	+	+	+	+	+	+	+	+	+	U												U
V	+	+	+	+	+	+	+	+	+	+	+	+	+	V												V
W	+	+	+	+	+	+	+	+	+	+	+	+	+	W												W
X	+	31	+	32	+	33	+	34	+	35	+	36	+	X												X
Y	+	+	+	+	+	+	+	+	+	+	+	+	+	Y												Y
Z	+	+	+	+	+	+	+	+	+	+	+	+	+	Z												Z
	1	2	3	4	5	6	7	8	9	10	11	12	13	14	15	16	17	18	19	20	21	22	23	24	25	

Firm/Agency, Address

ANTELOPE SURVEYING
 4903 S. FOX STREET
 ENGLEWOOD, CO. 80110

This corner record was prepared by me or under my direction and supervision.

SEAL & SIGNATURE

Telephone Number: 303-748-2181

Corner Name SE Corner Section 9, T 15 N, R 65 W, 6th P.M.

Cross-Index No.: J-13

County: LARAMIE Wyoming

SBRPEPLS/PLSW: March 1994; PLSW January 1998